

Wireless sensor

Window handle FHF Hoppe  
'SecuSignal'



Temperature at mounting location:  
-20°C up to +65°C.  
Storage temperature: -25°C up to +70°C.  
Relative humidity:  
annual average value <75%.

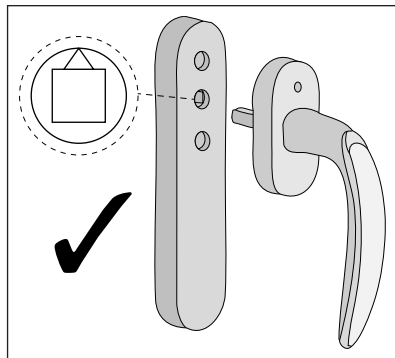
Wireless Hoppe 'SecuSignal' window handles with integrated wireless transmit module, no battery or cable required. Transmit wireless telegrams automatically when windows are opened, tilted or closed.

**The scope of supply includes complete installation materials.**

Suppliable with or without lock. Can be taught-in in many actuators. Among other things up to 10 pieces with individual display into the wireless universal display FUA55LED.

**Check rotation position of square hole in wireless transmit module:**

Remove window handle from wireless transmit module and compare rotation position of square hole with position depicted in drawing below. Correct if necessary. Reinsert window handle in wireless transmit module with handle pointing downwards.



**Caution:** If the square hole is in the incorrect position in the wireless transmit module, incorrect telegrams will be sent.

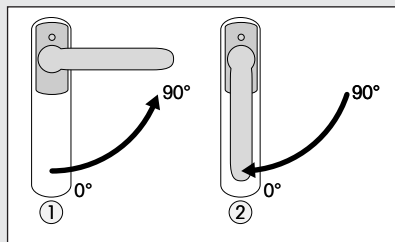
**Teaching-in wireless sensors in wireless actuators**

**All sensors must be taught-in in the actuators so that they can detect and execute commands.**

The teach-in process is described in the operating instructions of actuators.

**Teach-in wireless HOPPE window handles 'SecuSignal' in actuators:**

Turn window handle from closed to open position and back again.



**Technical data**

Frequency	868.3 MHz
Bandwidth	280 KHz
Modulation	ASK (Amplitude-Shift-Keying)
Transmission rate	120 kbps +/- 5%
Transmit power	max. 10 mW EIRP

**Disposal:**

The icon warning on the product or its packaging indicates that the product may not be disposed of in normal domestic refuse.

Users are obliged to hand in old equipment to a collection facility for waste electrical and electronic equipment (WEEE).

**CE conformity:**

The SecuSignal system bears the CE mark and therefore conforms to the pertinent European directives. HOPPE AG confirms that this product conforms to the following directives:

- EU Directive 1999/5/EC 'R&TTE Directive'
- EU Directive 89/336/EEC 'Electromagnetic Compatibility'

The Declaration of Conformity is available from the manufacturer.

**Must be kept for later use!**

**Eltako GmbH**

D-70736 Fellbach

+49 711 94350000

www.eltako.com